



# MONTHLY MEMBERSHIP PROGRESS REPORT

District 321C1

Results as of: 10/31/2016

GMT: V S Kukreja

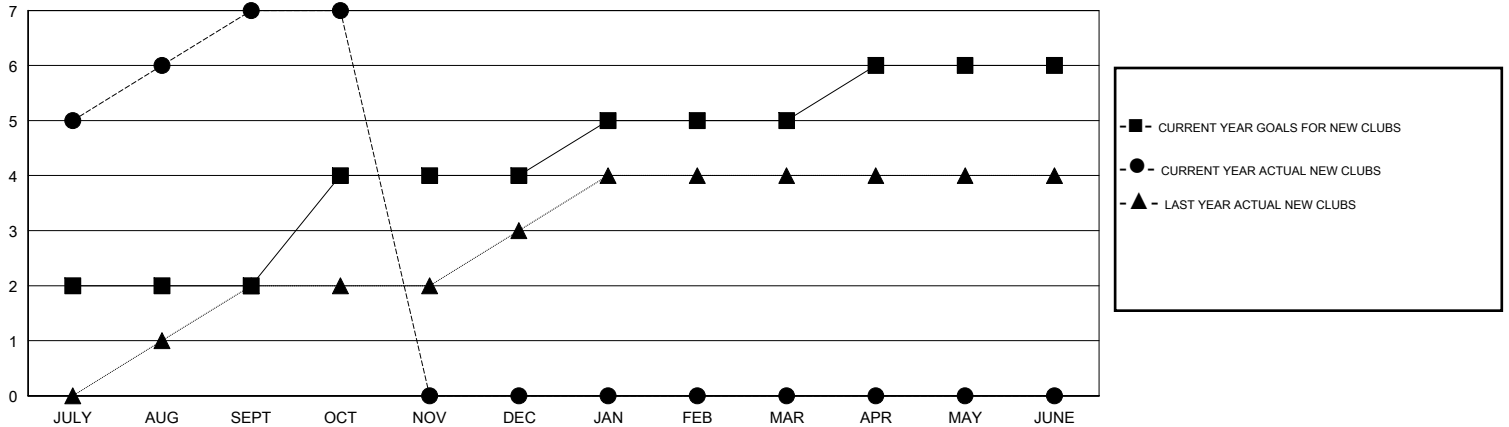
LOCATION INDIA

GMT CA 6

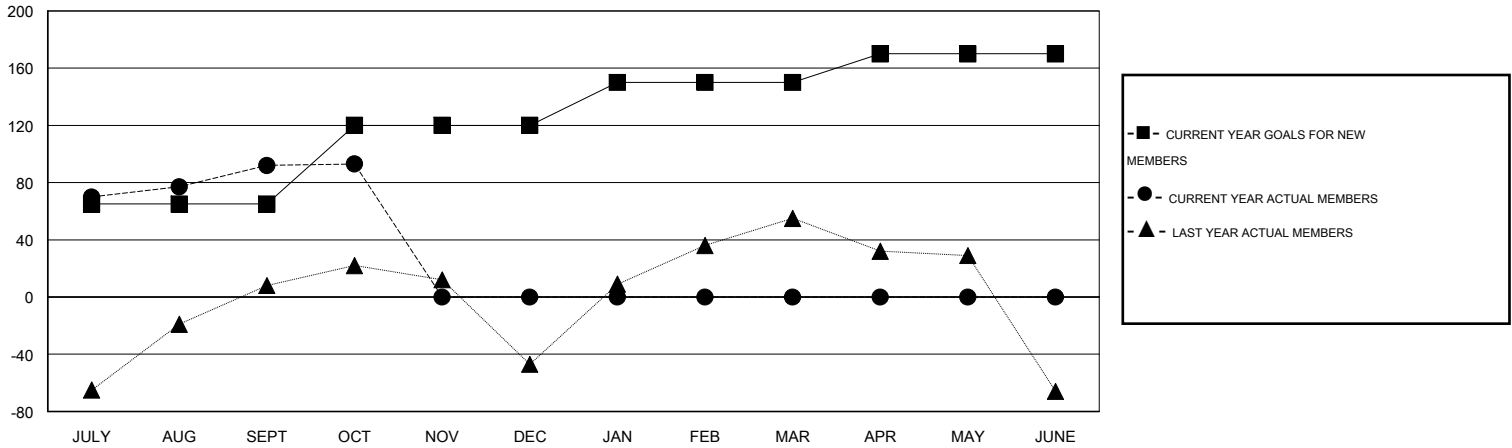
Clubs				
RESULTS FOR 2016-2017				
QUARTER	NEW CLUB GOAL	NEW CLUBS	DROPPED CLUBS	NET GAIN/LOSS
JULY/AUG/SEPT	2	7	0	7
OCT/NOV/DEC	2	0	0	0
JAN/FEB/MAR	1	0	0	0
APR/MAY/JUNE	1	0	0	0

Members				
RESULTS FOR 2016-2017				
QUARTER	NEW MEMBER GOAL	CHARTER AND NEW MEMBERS ADDED	DROPPED MEMBERS	NET GAIN/LOSS
JULY/AUG/SEPT	65	214	122	92
OCT/NOV/DEC	55	26	25	1
JAN/FEB/MAR	30	0	0	0
APR/MAY/JUNE	20	0	0	0

GOALS AND ACTUAL NEW CLUBS CUMULATIVE



GOALS AND ACTUAL MEMBERS CUMULATIVE



DROPPED CLUBS: 0
------------------

32 CLUBS OF 139 ADDED 1 OR MORE NEW MEMBERS

GENDER DISTRIBUTION	
MALE	3,175 (80.69%)
FEMALE	760 (19.31%)

DROPPED MEMBERS	
DECEASED	4
CLUB CANCELLED	0
OTHER	143
<b>TOTAL</b>	<b>147</b>

[CLICK HERE FOR HEALTH ASSESSMENT DATA](#)

FAMILY UNIT MEMBERS	1,171
HEAD OF HOUSEHOLD	548
NON-HEAD OF HOUSEHOLD	623